

product specifications for:  
**CLS Series 16 Inline Cams**

**Item #: CLS20FB**

**Description**

FEMALE CLS SERIES 16 INLINE #2 - 2/0 AWG

**Electrical Specifications**

Max. Amperage: 300A with 2/0 AWG  
Max. Voltage: 600V AC/DC

**Material Specifications**

Housing Material: Santoprene TPV  
Contact Material: Brass  
Temperature Rating: -40°C to 105°C

**Mechanical Specification**

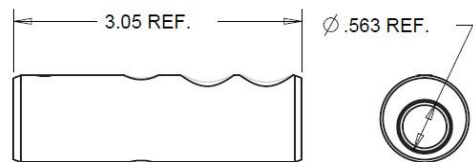
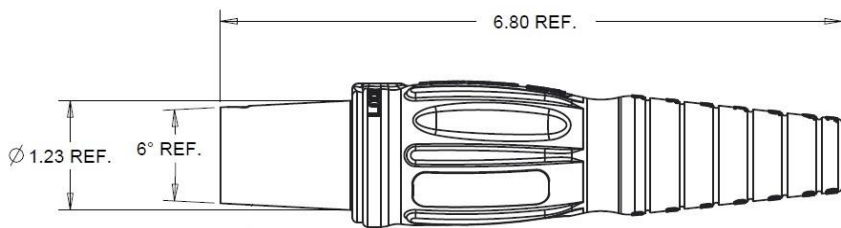
Gender: Female  
Connection Type: Double Set Screw  
(Torque to 160 in-lbs.)  
Retaining Screw: Glass Filled / Heat Stabilized Nylon

Example: CLS20FB + **A** = CLS20FB-A

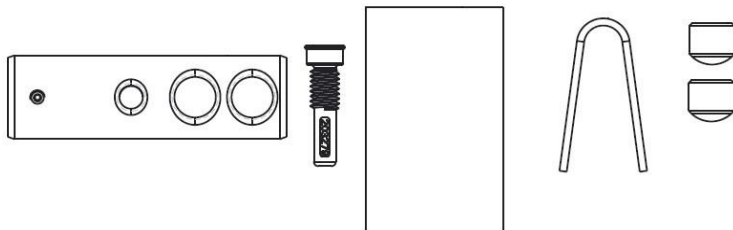


**Standards and Certifications**

UL Listed: File E471676  
CSA Certified: 0812900000  
Environmental Rating: Type 3R & 4



SHOWN FOR SIZING



product specifications for:  
**CLS Series 16 Inline Cams**

**Item #: CLS20MB**

**Description**

MALE CLS SERIES 16 INLINE #2 - 2/0 AWG

**Electrical Specifications**

Max. Amperage: 300A with 2/0 AWG

Max. Voltage: 600V AC/DC

**Material Specifications**

Housing Material: Santoprene TPV

Contact Material: Brass

Temperature Rating: -40°C to 105°C

**Mechanical Specification**

Gender: Male

Connection Type: Double Set Screw

(Torque to 160 in-lbs.)

Retaining Screw: Glass Filled / Heat Stabilized Nylon

Example: CLS20MB + **A** = CLS20MB-A

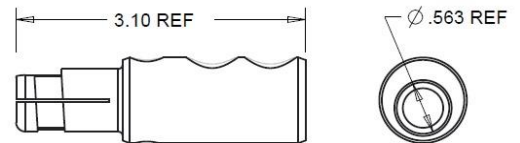
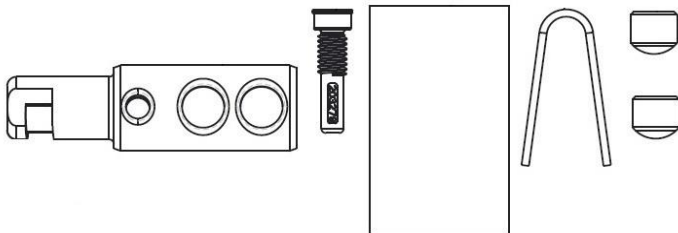
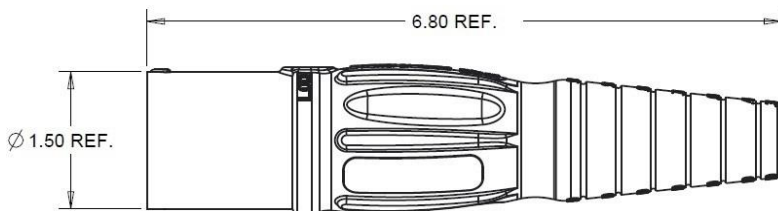


**Standards and Certifications**

UL Listed: File E471676

CSA Certified: 0812900000

Environmental Rating: Type 3R & 4



SHOWN FOR SIZING